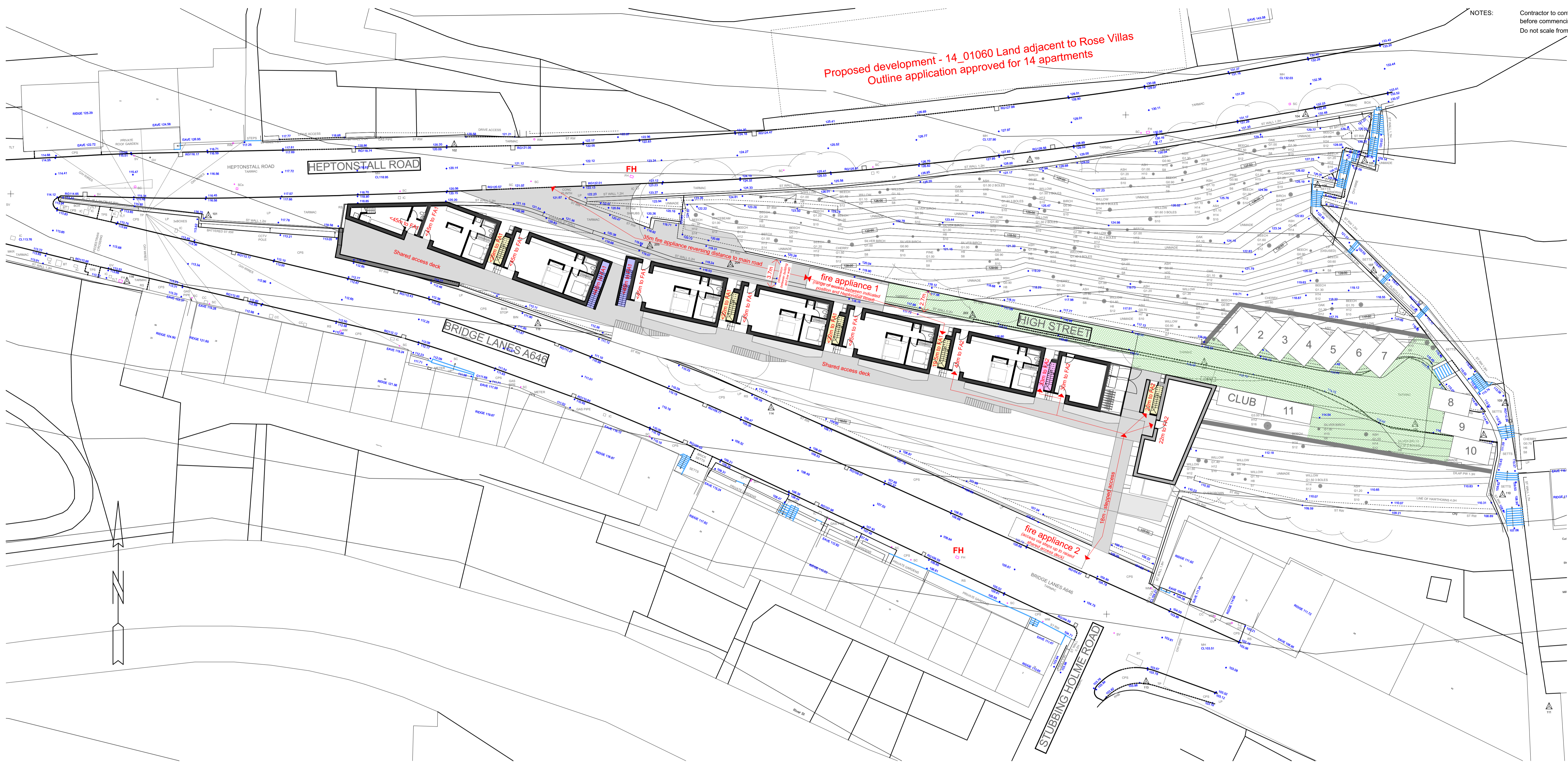


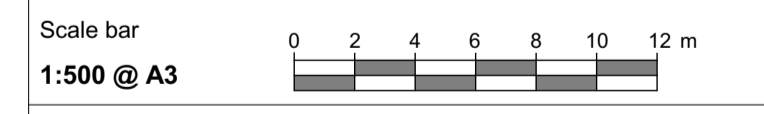
Proposed development - 14_01060 Land adjacent to Rose Villas
Outline application approved for 14 apartments



- KEY:**
- (left) (above) - Ground storey flat with direct access to street/deck.
 - 2 storey flat with entrance door at First Floor level. ~19m route from shared entrance door to furthest point of premises.
 - 3 storey flat with entrance door at First Floor level. ~26m route from shared entrance door to furthest point of premises.
 - S** - Ventilated, secure external space with override for fire service access. Shared stair access to 2no. private flat entrance doors at first floor level.
 - P** - Ventilated, secure external space with override for fire service access. Private stair access to 1no. private flat entrance door at first floor level.
 - E** - External stair access to 1no. private flat entrance door at first floor level.

Note: Fire appliance locations and distances shown indicatively. Fire Service to confirm feasibility of proposal.

RevID	Issue Date	Revision	Status
00	16/03/2017	Issued as draft status to West Yorkshire Fire Service for comments.	DRAFT



Client: CVCLT
Project: High Street Hebden Bridge

Project No. 853.HSHB
Drawing Title: Fire and Access Site Strategy
Drawing No. 853HSHB_150
Revision: 00