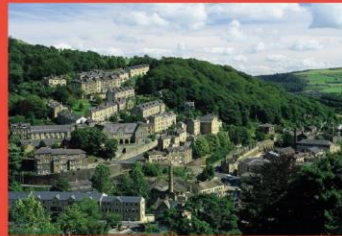


Calder Valley Community Land Trust

Bringing affordable housing back to High Street



Public Consultation - The Sequel

11.00am Saturday 25 March 2017

Hebden Royd Methodist Church Hall

(opposite the Co-op, Market Street HX7 6EU)

Calder Valley Community Land Trust has been successful in obtaining funding from Locality to help us develop plans for affordable housing near the bottom of Heptonstall Road, an area of town that was once an important centre for housing.

locality

Communities ambitious for change

What type of housing do we want to see in Hebden Bridge?

How can we keep our housing affordable?

Could the scheme help alleviate flooding?

Who should we be building homes for?

Would you like to live there yourself?

If so, would you like some shared facilities?

How can we keep the area as green as possible?

How can you help Hebden Bridge thrive?

BaumanLyons ARCHITECTS

Calder Valley Community Land Trust is registered under the Co-operative and Community Benefit Societies Act 2014, Registration Number 7038. It has charitable status with HMRC, Registration Number EW35609. [c] Calder Valley CLT 2017. All Rights Reserved.



High Street
Hebden Bridge

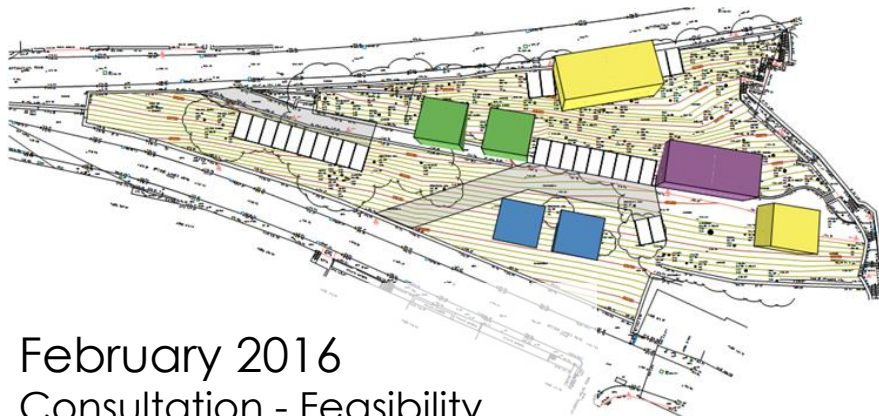
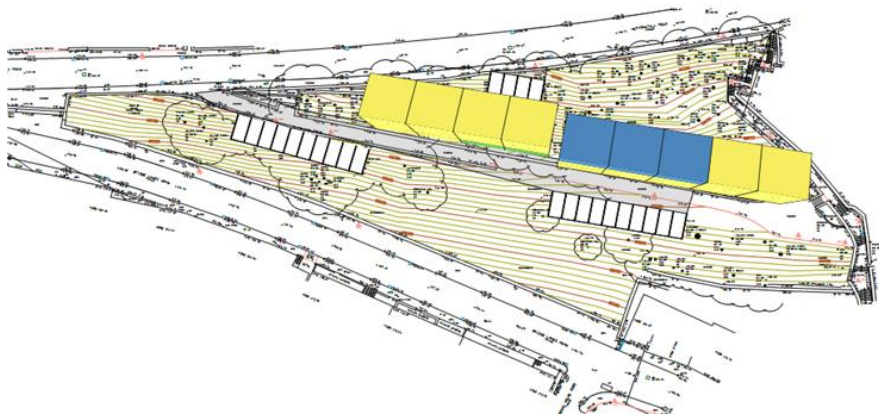


Heptonstall Road

High Street

Bridge Lanes

High Street
Hebden Bridge

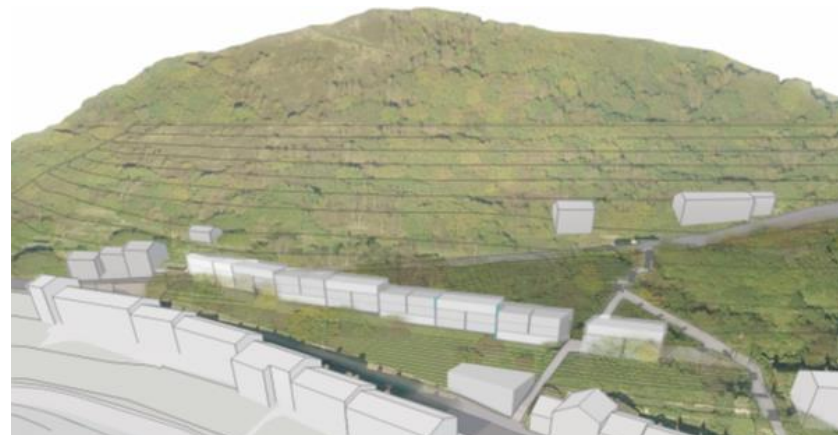


February 2016
Consultation - Feasibility

OPTION 1

1 Long Terrace

3 Storeys



OPTION 2

Short Terraces

4 Storeys



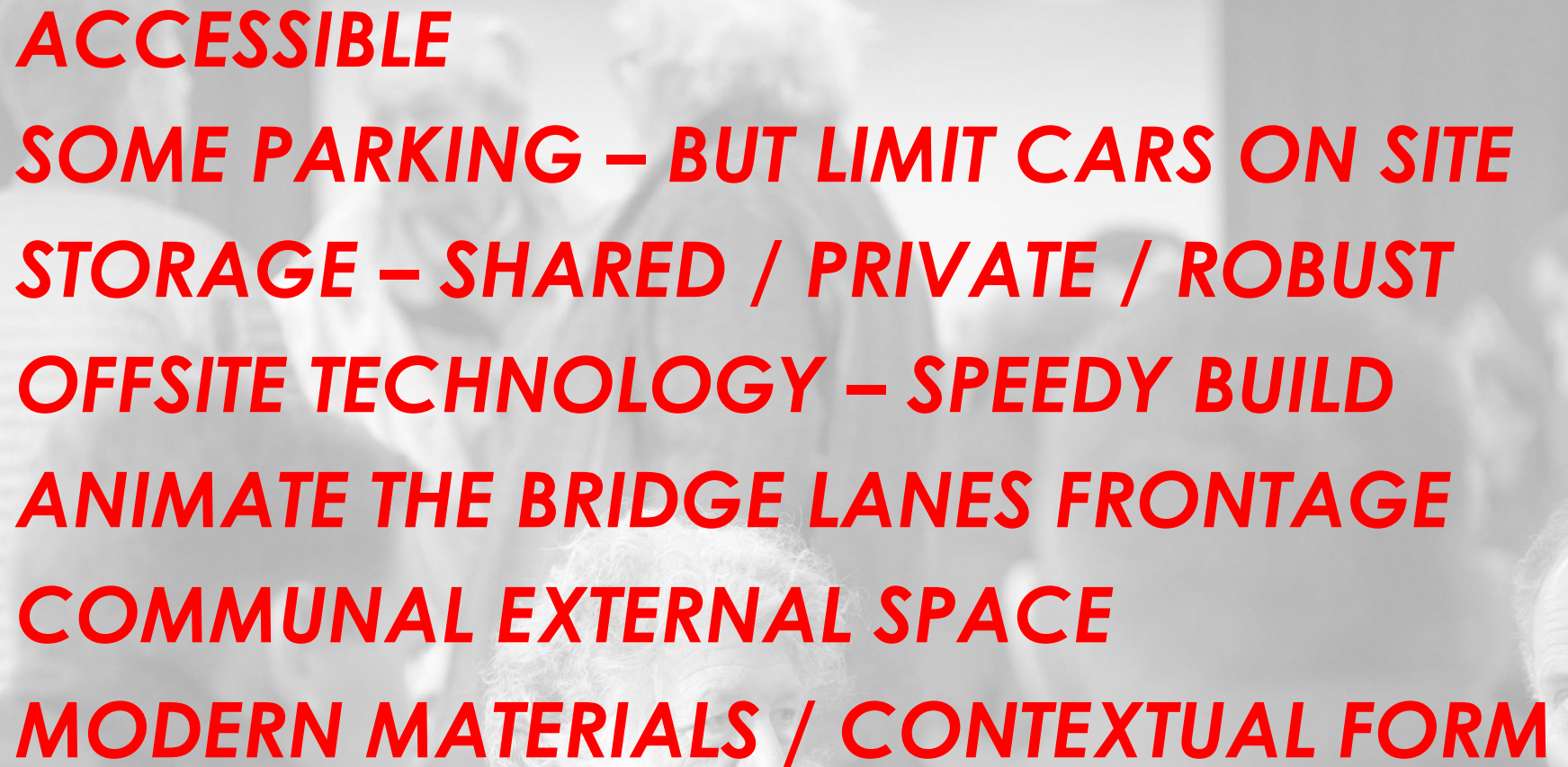
OPTION 3

Terrace with varying heights

2-4 Storeys



January 2017
Consultation - Massing



ACCESSIBLE
SOME PARKING – BUT LIMIT CARS ON SITE
STORAGE – SHARED / PRIVATE / ROBUST
OFFSITE TECHNOLOGY – SPEEDY BUILD
ANIMATE THE BRIDGE LANES FRONTAGE
COMMUNAL EXTERNAL SPACE
MODERN MATERIALS / CONTEXTUAL FORM

Consultations
What did people tell us?



Consultations
Design & Materials



Part of Hebden Bridge
Making a place (within a
place)



PREVIOUSLY DEVELOPED
DIFFICULT TO ACCESS
DENSE WOODLAND
PUBLIC TRANSPORT
SOUTH FACING
STEEP!

Part of Hebden Bridge
Site – Characteristics &
Challenges





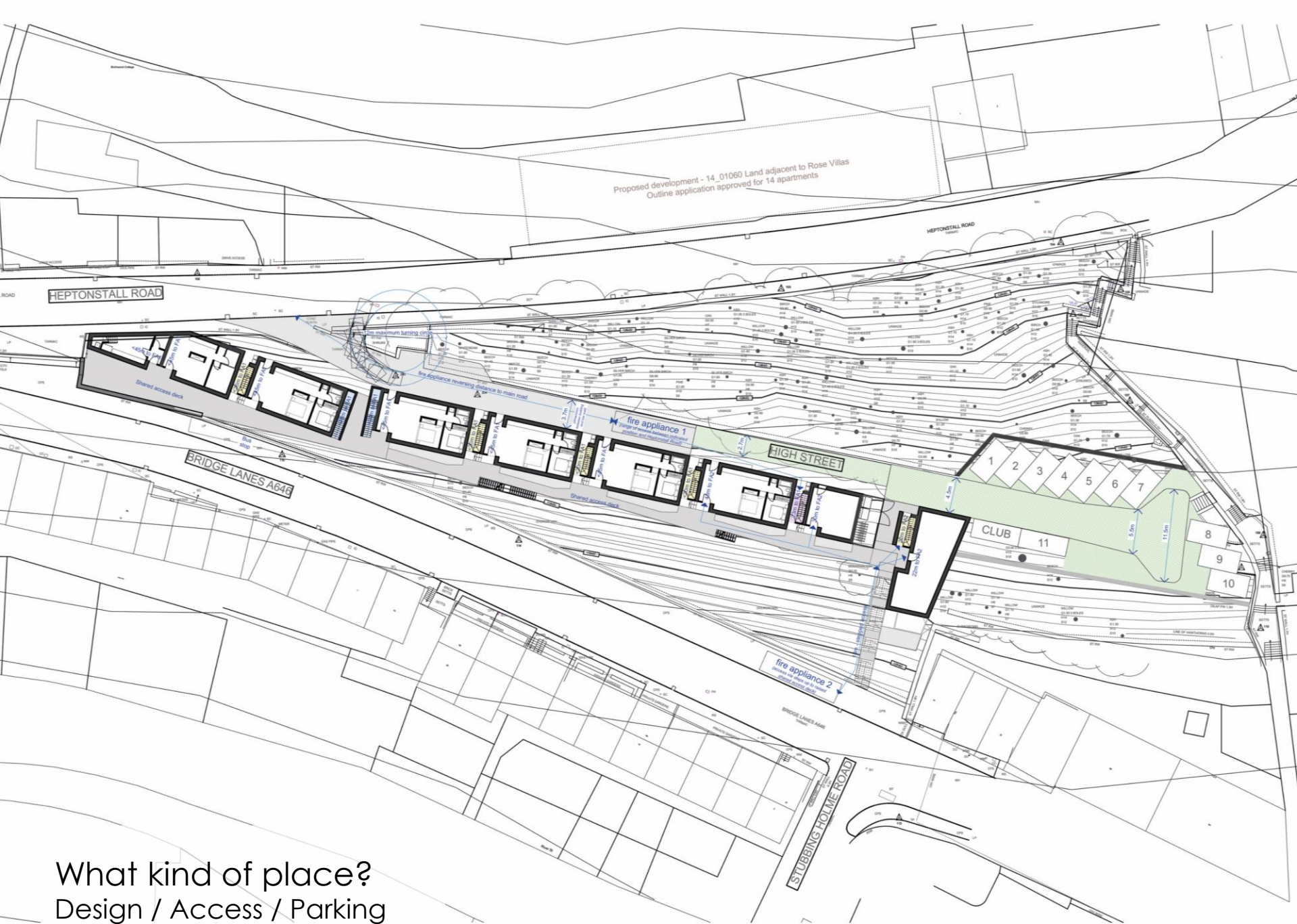
Part of Hebden Bridge
Site – Characteristics &
Challenges



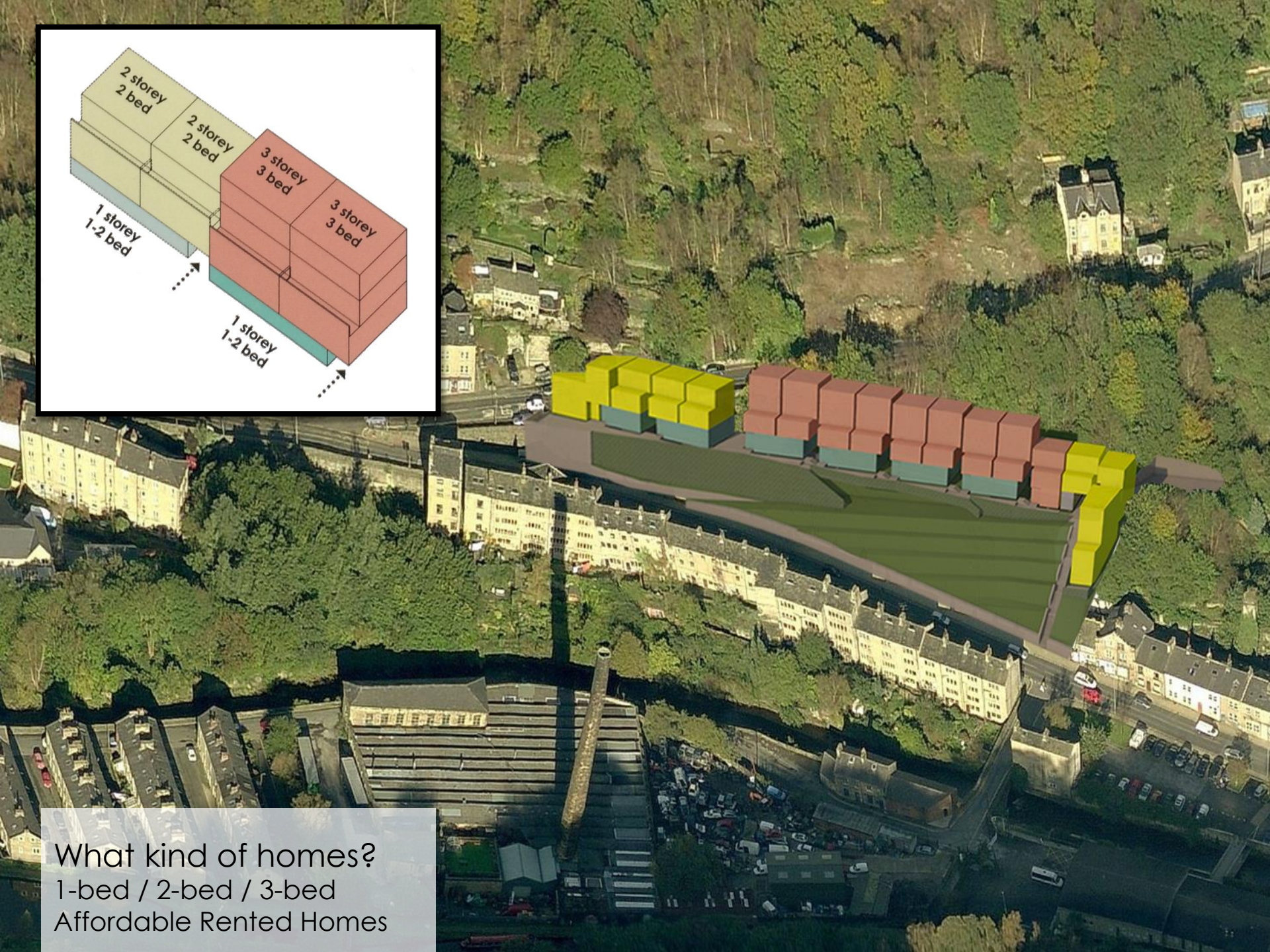
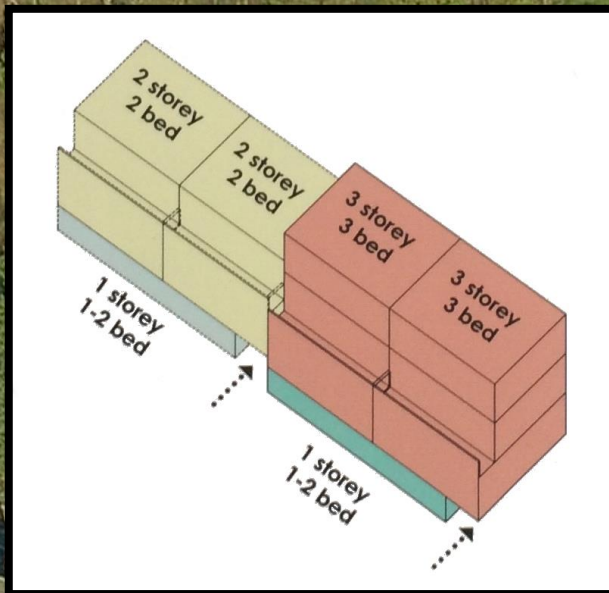
What kind of place?
View from
Horsehold Road



What kind of place?
Context & Design
Terrace Typology



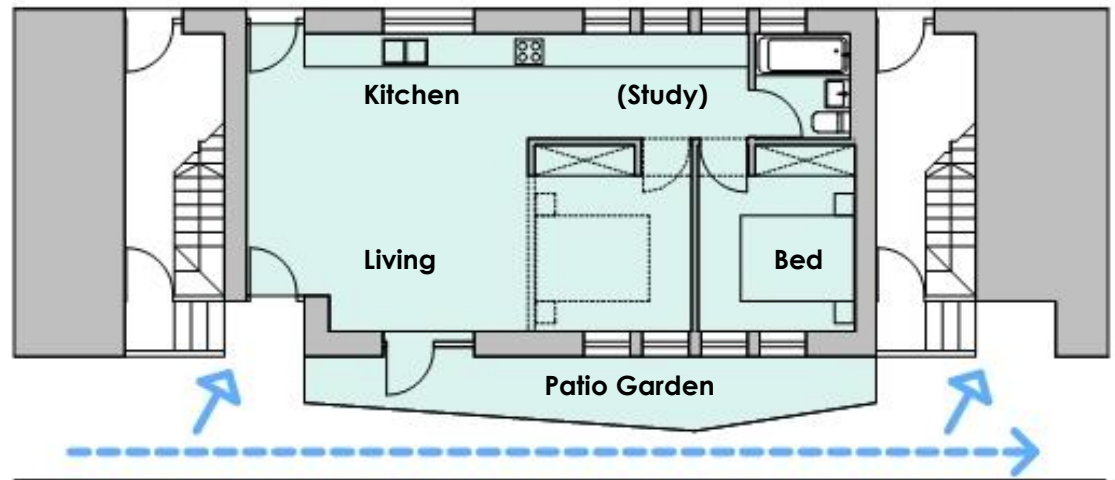
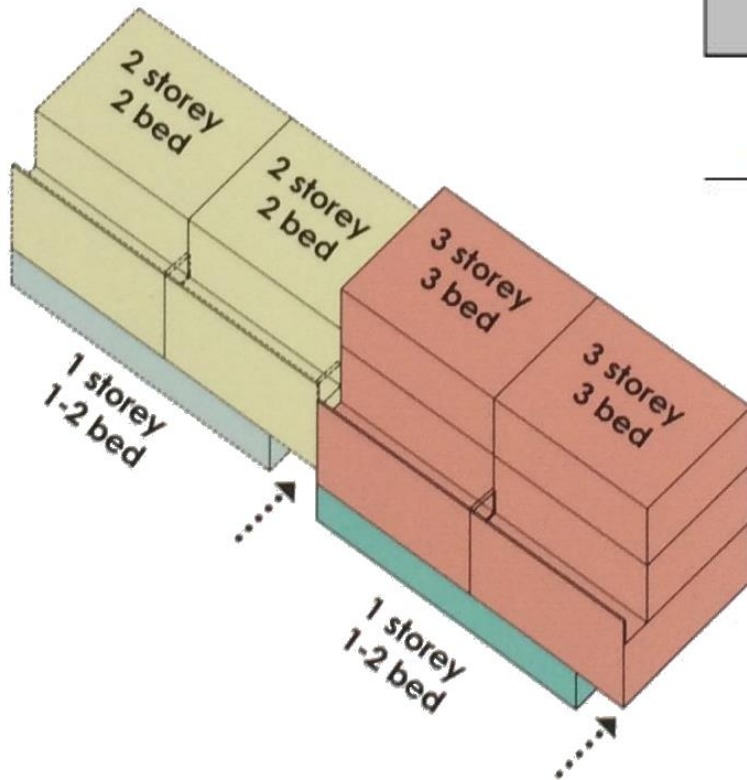
What kind of place?
Design / Access / Parking



What kind of homes?
1-bed / 2-bed / 3-bed
Affordable Rented Homes

1-bed Garden Flat – 60m²

Can expand to 2-bed
Ground Floor Entry level



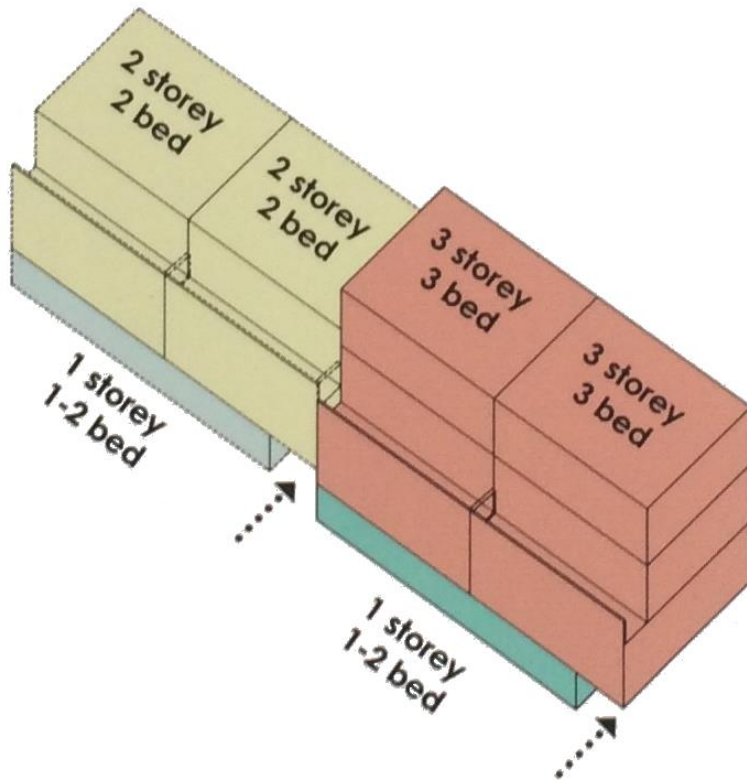
What kind of homes?

Designed for living alone
and together

2-bed Balcony Flat – 65m²

2-storey

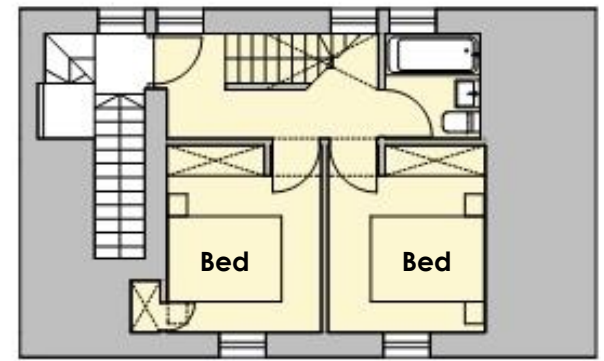
1st Floor Entry level



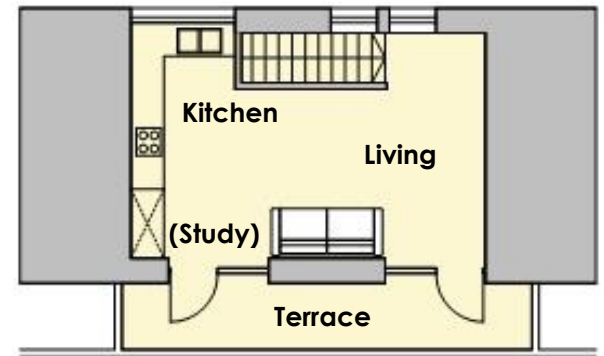
What kind of homes?

Designed for living alone
and together

1st Floor
(Entry level)



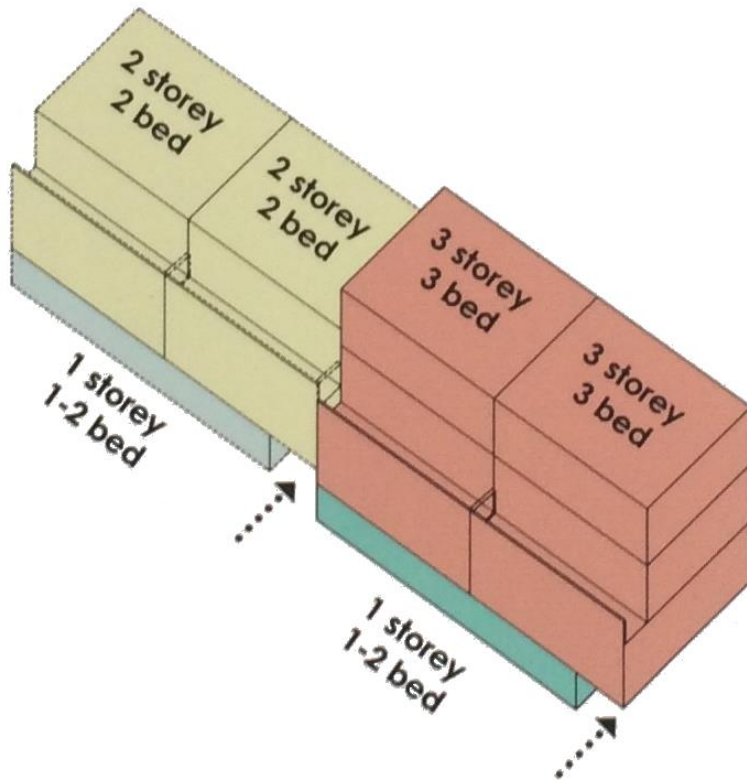
2nd Floor



3-bed Balcony Flat – 90m²

3-storey

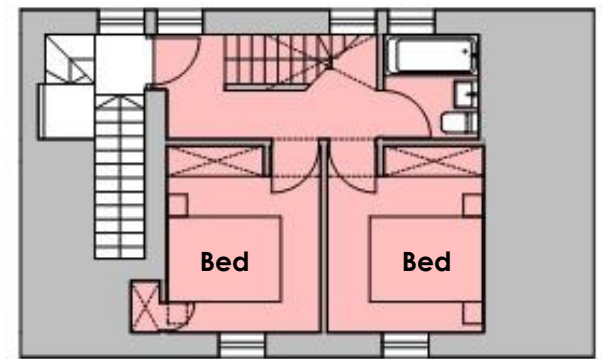
1st Floor Entry level



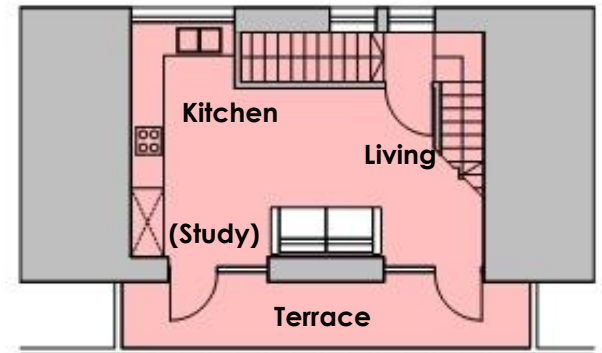
What kind of homes?

Designed for living alone
and together

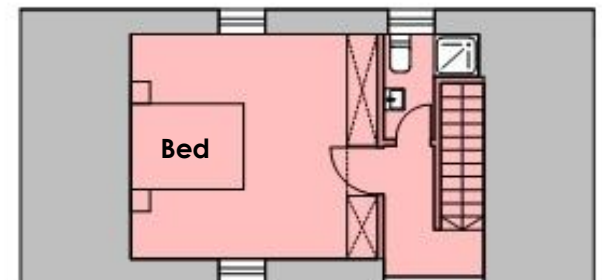
1st Floor
(Entry level)



2nd Floor



3rd Floor





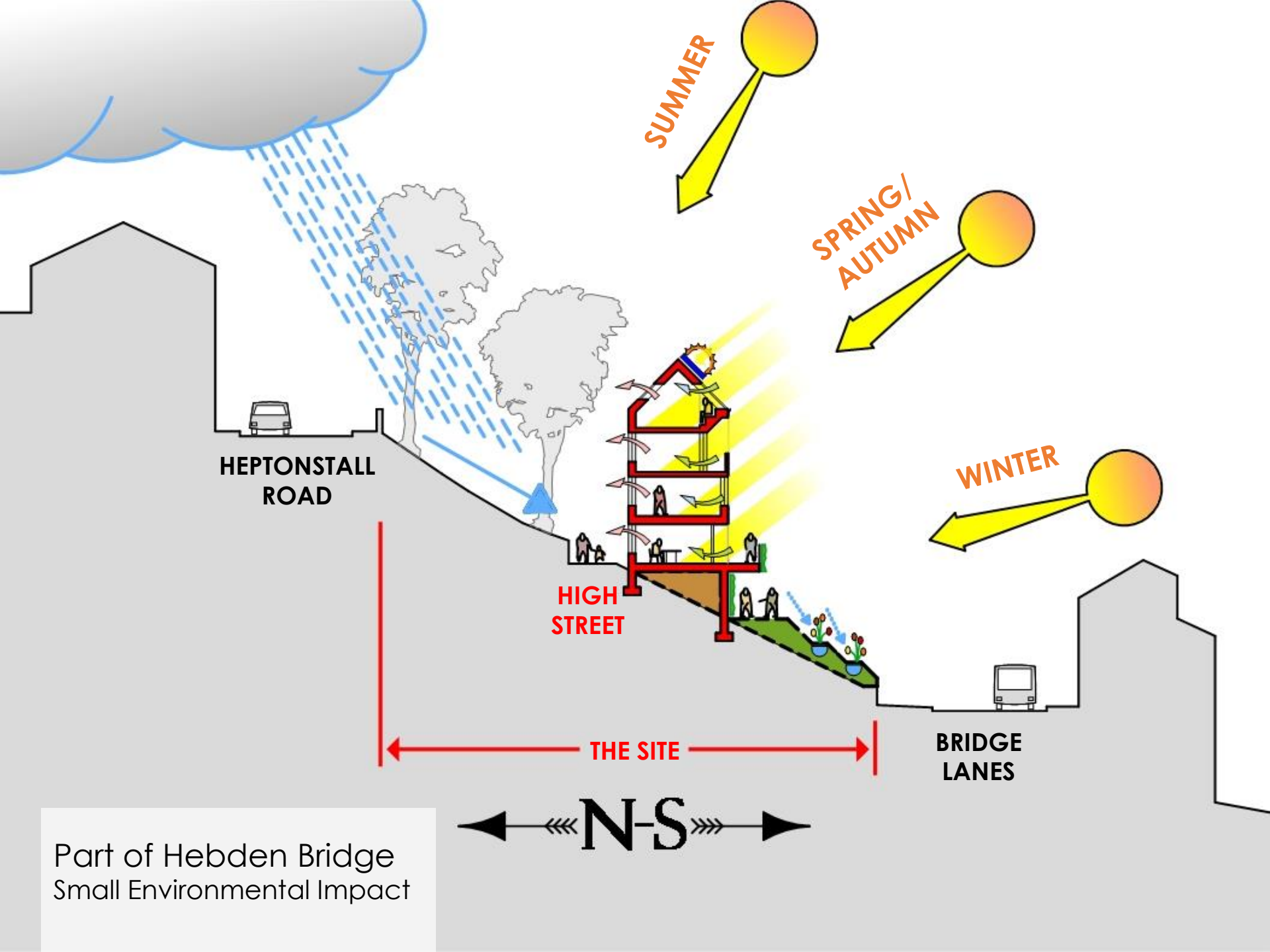
What kind of homes?
Designed for living alone
and together



What kind of homes?
View from
Fox and Goose Inn



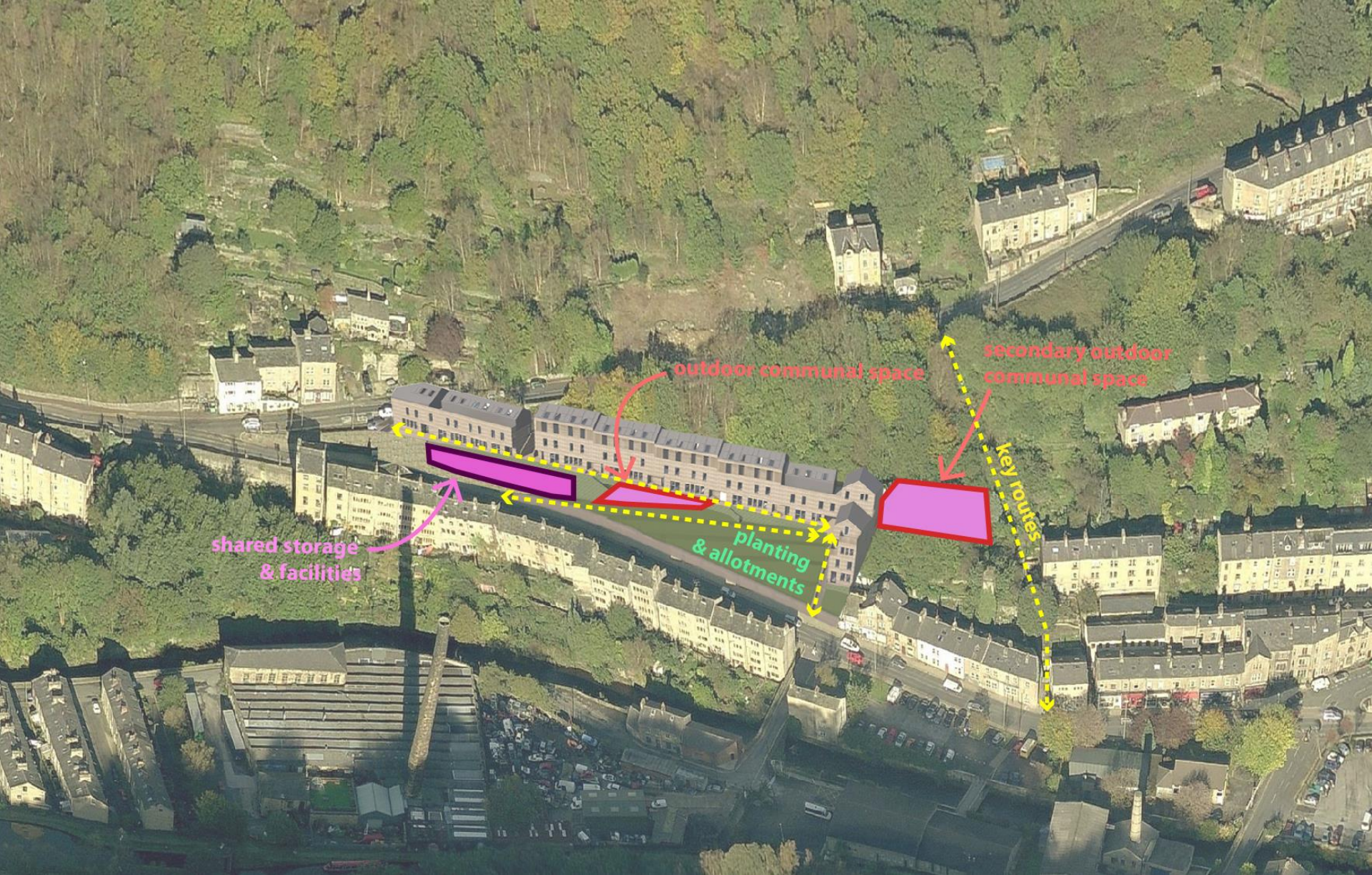
What kind of homes?
View from
Stubbing Holme Road



Part of Hebden Bridge
Small Environmental Impact



Part of Hebden Bridge
Small Environmental Impact



Part of Hebden Bridge
Big Social Impact



Part of Hebden Bridge