

CVCLT news September 2025

It's only right that everyone should have a secure, decent and affordable place to call home.

Read all about how we create homes and community buildings.

It's been a long train coming

And now it has arrived! We have a lease on the Signal Box in Hebden Bridge, which means we can start to bring the building to life as a heritage attraction and holiday accommodation. Railway enthusiasts and others will be able to bed down for the night and immerse themselves in all that is rail.

Thank you to the [Railway Heritage Trust](#), the [National Lottery Heritage Fund](#) and [Hebden Royd Town Council](#) for supporting the project.



Help create secure tenancies in affordable homes & wonderful community buildings

We are almost entirely volunteer run. There's a wonderful sense of satisfaction gained in being part of CVCLT

Imagine, for years to come, walking past a building and saying to yourself "I helped make that happen". Or even better, "I helped give that person a home".

Find out more by contacting our Chair, Simon Brearley and our manager, Paul Brannigan: simon.brearley@caldervalleyclt.org.uk / manager@caldervalleyclt.org.uk, telephone 07942 361205.

Leave your home and walk to work in summer 2026

The foundations for the enterprise centre offices at Ferney Lee are complete. The steel frame will go up this month. It is exciting! The offices will be warm, affordable, low carbon and in a lovely setting overlooking Centre Vale Park.

Contact with others is important for health, wellbeing and expanding your business. Imagine a walk to work, your own space to be productive with other likeminded people to engage with on a personal or a professional level.

Bringing back the chat with others when you're making a cup of tea in summer 2026.

Ferney Lee

Bringing 19 low carbon, energy efficient homes with secure tenancies at social rents and a 23 office enterprise centre to Todmorden. Completes Spring 2026

**Connect housing**

Calder Valley Community Land Trust

Homes England

Calderdale Council

TODMORDEN TOWN DEAL PARTNER

Funded by UK Government

For information on housing contact:
Connect Housing on 0300 5000 600 or at newhomes@connecthousing.org.uk

For information on the enterprise centre contact:
Calder Valley Community Land Trust at www.caldervalleyclt.org.uk or info@caldervalleyclt.org.uk

IP CONSTRUCTION
MAIN CONTRACTOR

CWPA
ARCHITECT

DUDLEYS
CONSULTING ENGINEERS
ENGINEERS

LK GROUP
EMPLOYERS AGENT

The Ferney Lee site will also have 19 one and two bed homes enabled by CVCLT and delivered by [Connect Housing](#). You need to register with [B-with-us](#) to be able to apply when applications open.

A combination of Towns funding and Homes England funding from the UK government supports these projects.

A vibrant Annual General Meeting

The meeting ended with one of our members saying, “I am astonished at how much has been delivered since last year, you have done an amazing job”.

Please spread the word, share this newsletter with people, share our social media posts and chat to people about the land trust’s work. The more people who get involved, the more people will have an affordable secure home in which to build a life.

The AGM took place at Fielden Hall. You can see low energy lighting, radiant heat panels and secondary glazing in this photo.



Finished but more energy efficiency to come!

The many people who take part in groups and events at [Fielden Hall](#) are now enjoying the green heating and ventilation system that has improved the feel of the Hall.

The project was delivered within budget, and we have funding to extend the works, which is likely to involve battery storage, sensor lighting & taps and more.

Find out more about the Hall and the people who use it [here](#).

UK government funding from the Towns Fund and the Community Ownership Fund along with National Lottery Funding have enabled us to bring this project to life.



Heptonstall

We are looking to purchase and renovate a property in Heptonstall. We have secured some funding and are awaiting a decision on a grant application for funding from Calderdale Council. If successful, we would offer an investment opportunity in community shares to the local community to raise the balance.



Helping those fleeing danger

Leased from Calderdale Council, we are carrying out surveys to bring these empty properties on Crown Street in Hebden Bridge back into use.

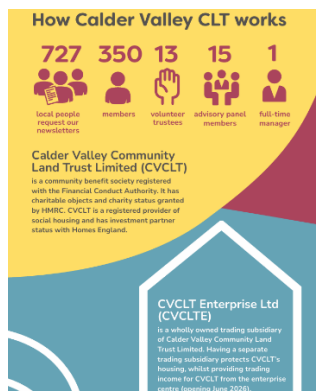
The funding is designated for the creation of homes for refugees, but should they cease to be needed to house people with refugee status, these homes will become available to house local residents.



Our new annual review is out now

It tells our story in one easy read and can be downloaded [here](#). Please share with people you know to encourage more people to help, and in turn more people will have secure affordable tenancies.

You can join [here](#).



Thank you

Thank you to the [Rotary Club of Hebden Bridge](#) for a grant to help produce our new annual reviews and for an improved website that enables us to encourage more people to support our work.

And thank you for reading. If you enjoyed reading, then please share with people you think may support us.

Calder Valley Community Land Trust <https://caldervalleyclt.org.uk/>

07942 361205 info@caldervalleyclt.org.uk

Every new member makes a difference. To take the next step from newsletter reader to member please [click](#).

