

# CVCLT news June 2026

## AGM 2026

**This Saturday, 20<sup>th</sup> June**, we invite you to our lightning talks (sharing the essence of a number of topics, in less than 5 minutes each) followed by our AGM at Hope Baptist Church, Hebden Bridge from 11am to 12.30pm.

[Tickets](#) (helpful to us but not essential).

[Agenda & Papers](#)

## I can do that for CVCLT

If you're a can do kind of person, please get in touch. Attitude is the most important characteristic of our volunteers. We'll try to match what you can do to what CVCLT needs. Please drop a line to Paul at [manager@caldervallyclt.org.uk](mailto:manager@caldervallyclt.org.uk) or ring 07942361205.

## Hebden Bridge Signal Box



The contractors have started the refurbishment of Hebden Bridge Signal Box as the first step towards us creating a heritage attraction and holiday accommodation. Once complete, we will then install the furniture, the first exhibits and the signalling

simulator in the heritage centre on the first floor. We are hoping to open the Signal Box in mid-September, in readiness for Heritage Week. Look out for information about our Grand Opening.

There's a great video on the history of the Signal Box in [Signalling The Last Train](#)

Thank you to the [Railway Heritage Trust](#), the [National Lottery Heritage Fund](#) and [Hebden Royd Town Council](#) for supporting the project.

## Tod Works – help us promote our community owned offices

Workspaces for teams of all sizes

Upto 2 desks from £244/month

Upto 4 desks from £558/month

Upto 6 desks from £645/month

Upto 8 desks from £1050/month

**What's included?**  
Everything you need, all in one place.  
High-speed internet Meeting rooms with AV Shared kitchen facilities Secure 24/7 access

**Added Benefits**  
More than just a workspace.  
Parking with EV charging Secure bicycle storage Fully accessible building High-quality design

**Location & Lifestyle**  
Work close to what matters.  
Park-side setting Coffees, shops & market Close-by leisure centre Great transport links

Built for businesses at every stage

Tod Works now has 4 tenants signed up and we need your help to find the remaining 19 prior to opening in late summer. Please share any of our posts from these channels:

- <https://www.facebook.com/people/Tod-Works/61584790118374/>
- [https://www.instagram.com/Tod\\_works](https://www.instagram.com/Tod_works)
- <https://x.com/TodWorks>
- <https://www.linkedin.com/company/112592614/>

Unit sizes from 2-8 desks available.

Listen to the many local reasons why Giles from [GB Entrance Engineering](#) chose to be our first tenant.

This project is funded UK Government's Towns Fund.

## Homes for Refugees

We have agreed to accept the latest lease on the properties above One Stop on Crown Street in Hebden Bridge. Once signed, we can instruct our contractor to begin the renovation.

The grant for this work is designated to create homes for people resettled or relocated from Ukraine or Afghanistan, but should they cease to be needed to house those people, these homes will become available to house local residents.



## Northfield, Heptonstall

We raised all the money needed to bring a house in Northfield, Heptonstall into community ownership. The support from so many of you was amazing and that was instrumental in us reaching our minimum target. We are very sorry to have to tell you that we are unable to proceed with the purchase and refurbishment of this house. This is because the house owner has withdrawn from the sale for personal reasons.

We are exploring the purchase of another house which we had put on hold due to a lack of time and capacity to progress it further. This house is of a similar size and value and would deliver comparable social benefits to the Northfield property.

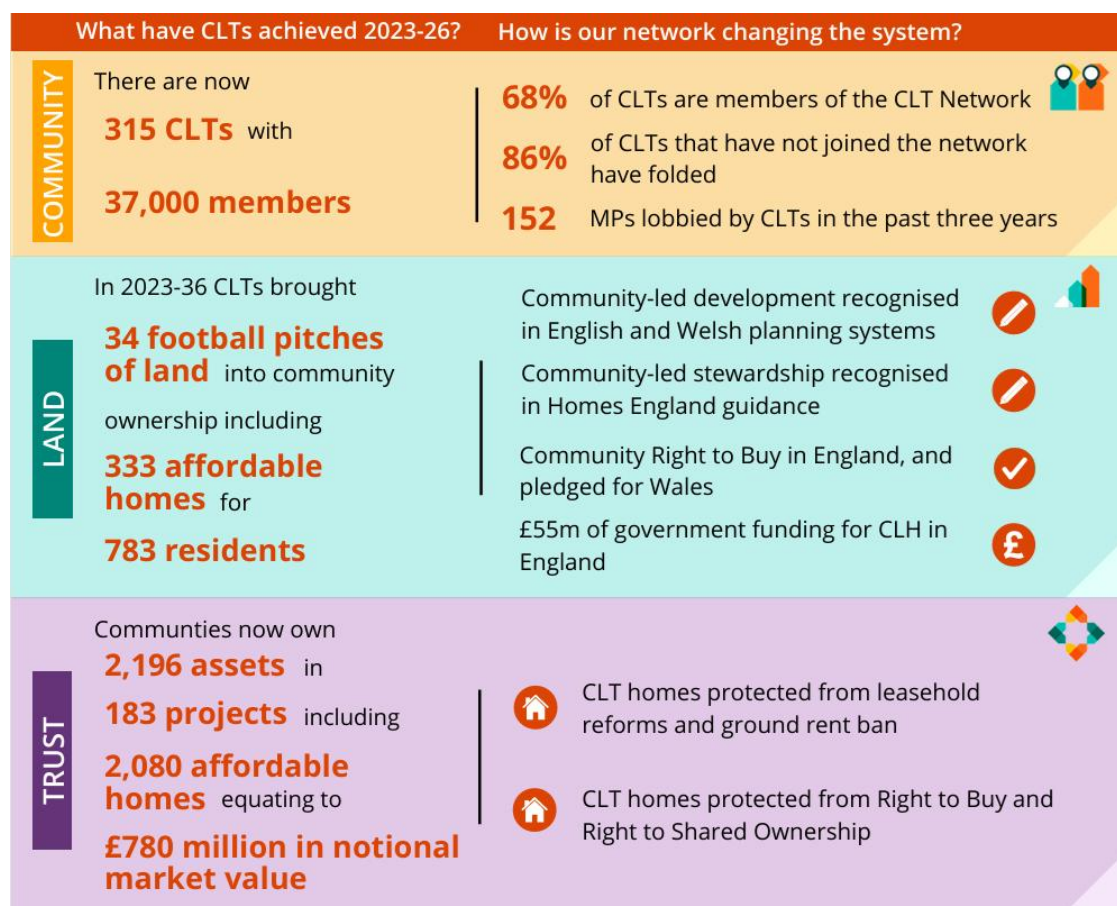
We are carrying out due diligence checks on this alternative, as well as liaising with grant providers.

Our plan is to present investors with full information about this similar project (through an addendum to the original share offer), along with the option to either keep your money invested or withdraw it.

We hope to be able to give you an update by the end of June 2026.

## Community Land Trust Network Impact Report

CVCLT have been given a starring role in this informative and interesting study of community land trusts in Wales & England. Download a copy [here](#).



Every new member makes a difference. To take the next step from newsletter reader to member please [click](#) or scan to join.



Calder Valley Community Land Trust <https://caldervalleyclt.org.uk/>  
07942 361205 [info@caldervalleyclt.org.uk](mailto:info@caldervalleyclt.org.uk)